

GAUGES FOR VALVE FITTINGS OTHER THAN LPG

Application: Valves of containers used for the conveyance of permanent, Liquefiable and Dissolved Gases up to working pressure 400 Bar. Valves of Breathing Apparatus, Fire Extinguishers.

* Does not cover valves for LPG (Liquid, Petroleum gas)

SPECIFICATION :

As per BS 341 Part I - 1991 *

* Gauges as per old BS 341 – 1962 standard can be supplied, if requested.

MANUFACTURING RANGE

Type, Nom. Dia. & TPI	Thread Profile	Type of Gauges for checking					
16 T 0.635"-18		Thread Plug Gauges to check Internal Threads	Plain Taper Plug Gauges	Thread Ring Gauges to check External Threads	Check Plug for Inspection of Ring Gauge.	Plain Taper Ring Gauges	Plain Taper Check Plug for Inspection of Plain Taper Ring Gauge.
18 T 0.715"-14							
19 T 0.735"-14							
32 T 1.25-11		set of 3 gauges.	set of 3 gauges.	set of 3 gauges.		set of 3 gauges.	
25 T 1" - 14		For details refer gauge drawings given below					
26 T 1.025"-14							

SPECIFICATION : As per DIN 477 - 1984

MANUFACTURING RANGE

Type, Nom. Dia. & TPI	Thread Profile	Type of Gauges for checking									
19.8 - 14	<p>3:25 Taper slope 12%</p>	Thread Plug Gauges to check Internal Threads	Plain Taper Plug Gauges	Thread Ring Gauges to check External Threads	Check Plug for Inspection of Ring Gauge.	Plain Taper Ring Gauges	Plain Taper Check Plug for Inspection of Plain Taper Ring Gauge.				
28.8 - 14								set of 3 gauges.	set of 3 gauges.	set of 3 gauges.	set of 3 gauges.
31.3 - 14								For details refer gauge drawings given below			

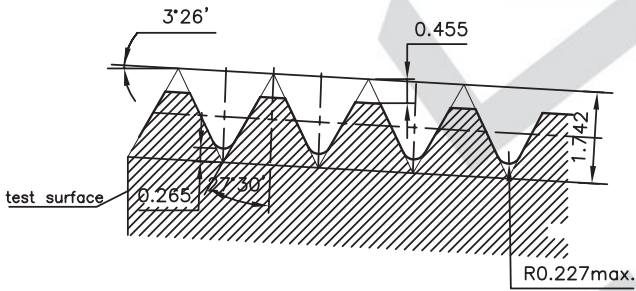
GAUGES FOR VALVE FITTINGS OTHER THAN LPG

Application: Valves of containers used for the conveyance of permanent, Liquefiable and Dissolved Gases up to working pressure 400 Bar. Valves of Breathing Apparatus, Fire Extinguishers.

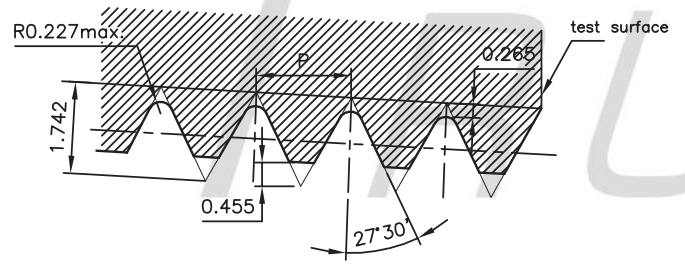
* Does not cover valves for LPG (Liquid, Petroleum gas)..

GAUGES FOR CHECKING THREADS.

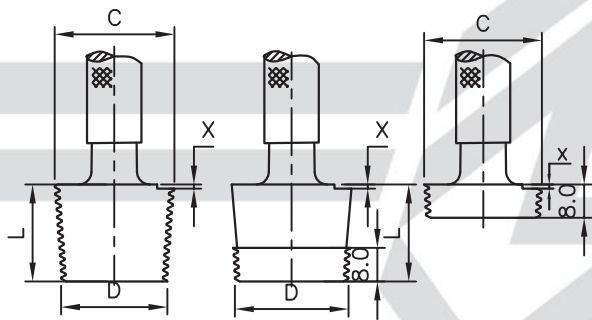
BS341 & DIN 477, & DIN EN 629 recommends similar type of gauges.



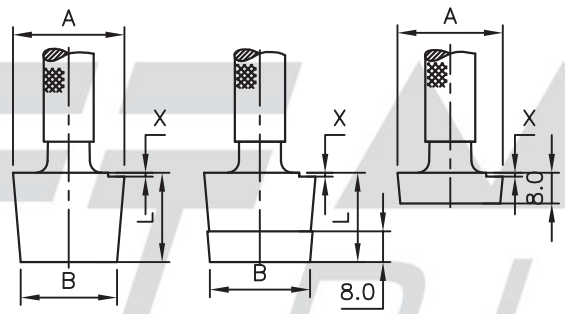
Thread Profile of Plug Gauges.



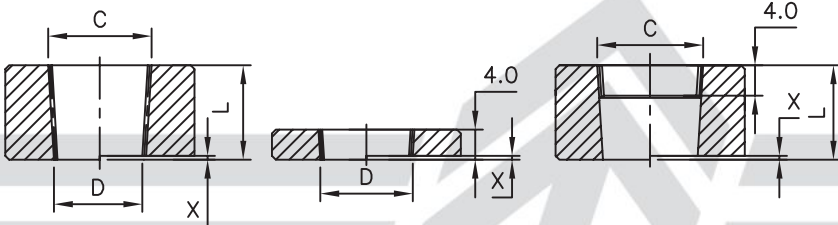
Thread Profile of Ring Gauges.



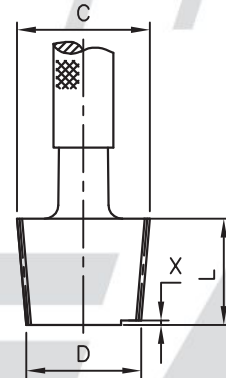
Thread Plug Gauges to check Internal Threads.
(Set of Three Gauges)



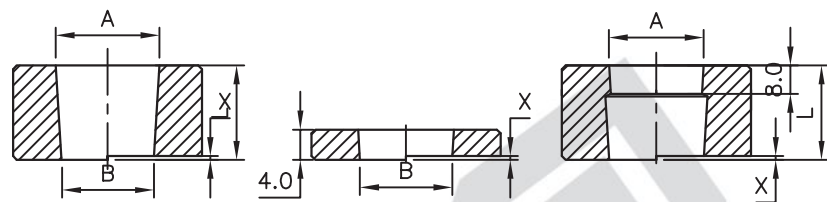
Plain Taper Plug Gauges to check Minor diameter of Internal Threads.
(Set of Three Gauges)



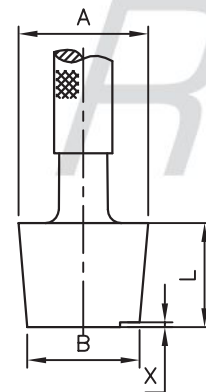
Thread Ring Gauges to check External Threads.
(Set of Three Gauges)



Check Plug for Inspection of Taper Ring Gauge.



Plain Taper Ring Gauges to check Major diameter of External Threads.
(Set of Three Gauges)



Plain Taper Check Plug for Inspection of Plain Taper Ring Gauge.